

Religious Education

This term our question will be 'What do Christians believe God is like?'

We will explore parables from the Bible and consider what these stories mean to Christians. We will then investigate how Christians show their belief in God and including saying sorry and forgiving others.

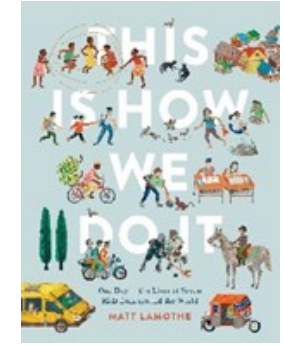
Reading

Year 1 children will continue to work through the phonics Bug Scheme and build up their sound knowledge.

Year 2 will build their comprehension skills using Accelerated Reader and through guided reading sessions. The theme for the first set of texts will be 'Significant Individuals'.

We will continue building the skills needed for good comprehension: Vocabulary, Inference, Prediction, Explaining, Retrieving and Sequencing.

Literacy—Writing



Physical Education

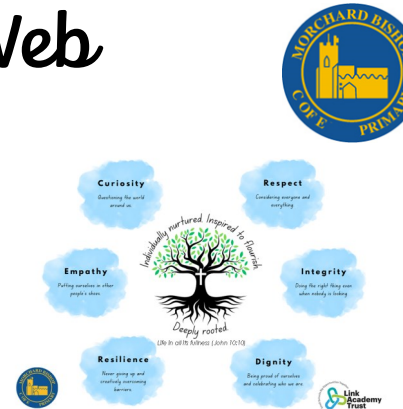
PE sessions will continue to be on a Tuesday and a Thursday, with Mr Luxa taking the Tuesday sessions. The focus for this term will be Multi-skills. This will allow the children to develop throwing, catching and hand-eye coordination. They will see how to use the skills within a variety of games.

Our Topic Web

Spring Term 1

2024

Willow Class



Mathematics

In Mathematics this term we will look at the concepts of multiplication and division. This will include a focus on the 2, 5 and 10 times tables.

All topics will include lots of discussion and practical activities to allow children to consolidate their learning and explain their thinking.

Expressive Arts and Design

Music: In music, we will explore pitch and tempo through the theme 'Superheroes'.

DT : In DT we will investigate mechanisms by designing and building a Ferris wheel. We will investigate appropriate materials and explore the use of axils.

Foundation Subjects

Science: The topic for this term is Animals including humans. We will find out the basic needs of animals for survival and the importance for humans of exercise, hygiene and eating the right amount of different foods.

History: The enquiry question for our topic is, Who is the greatest history maker? We will investigate significant individuals from a wide variety of locations, cultures and times, and consider what it means to make history.

PSHE: The next Jigsaw theme is 'Dreams and goals'. This topic will allow us to explore how to overcome obstacles when working towards a goal and look a different ways to tackle a challenge.