

## Religious Education

This term our first question will be 'What does it mean to belong to a faith community?' We will begin thinking about belonging and learn about how Christians, Muslims and Jews show they belong to their faith community.

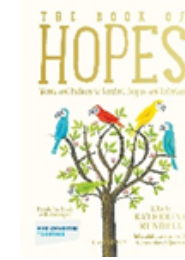
## Reading

Year 1 children will continue to work through the phonics Bug Scheme and build up their sound knowledge.

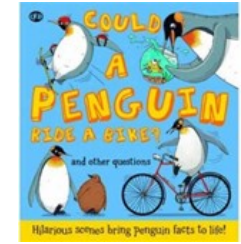
Year 2 will build their comprehension skills using Accelerated Reader and through guided reading sessions. The theme for the first set of texts will be 'Materials'.

We will introduce the skills needed for good comprehension: Vocabulary, Inference, Prediction, Explaining, Retrieving and Sequencing

## Literacy—Writing



Fiction text



Non-fiction text

## Physical Education

PE sessions will now be on a Tuesday and a Thursday, with Mr Luxa taking the Tuesday sessions.

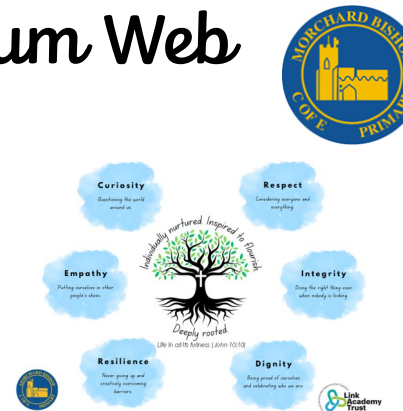
The focus for this term will be invasion games. This will allow the children to develop basic movements, throwing and catching skills and to develop simple tactics for attacking and defending.

## Our Curriculum Web

Autumn Term 1

2023

Willow  
Class



## Mathematics

In Mathematics this term we will be looking at place value before moving on to the skills of addition and subtraction.

All topics will include lots of discussion and practical activities to allow children to consolidate their learning and explain their thinking.

## Expressive Arts and Design

Music: In music, we will explore pulse and rhythm through the theme 'All about me'.

Art : In Art we will investigate craft and design through the theme of maps. We will use a variety of skills, including drawing and print making.

## Foundation Subjects

Science: The topic for science is Everyday Materials. We will identify and describe the properties of different materials and learn some of the skills needed to carry out an investigation.

Geography: The enquiry question for our topic is, Why don't penguins need to fly? We will explore how location is linked to climate, thinking about hot and cold places and how living things adapt to survive.

PSHE: The first Jigsaw theme of the year is 'Being me in my world'. We will explore feeling safe and special, and feeling proud of our achievements.