

## Religious Education

This term, we will be looking at our key question of 'Why do Christians believe Jesus was the Messiah?' This will investigate Jesus' acts, and why they were considered so amazing.

## Mathematics

In Mathematics this term, we will be moving on from the four operations and focusing on fractions. This will cover addition, subtraction, multiplication and division, but investigate improper fractions and mixed numbers.

## Literacy—Writing

For our writing this half term, we will be looking at two class texts: *Inside the Villains* and *Animalium*. We will cover a range of grammar features, such as passive voice and semi colons/ colons between independent clauses.

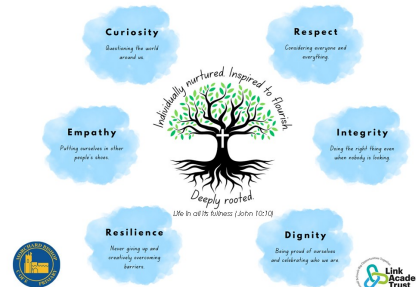


## Physical Education

We will focus on volleyball in PE this term. This will involve learning the basic skills of the sport, and how to work effectively as a team. Mr Lwza will continue to teach on a Tuesday, and Miss Symns will be teaching PE on a Friday.

# Our Curriculum Web

Spring  
Term 1  
2024  
Oak Class



## Reading

We will continue to use the VIPERS (Vocabulary, Infer, Predict, Explain, Retrieve and Summarise/Sequence) during our whole-class guided reading sessions. The texts will contain information that will benefit the children in their other subjects, such as information texts about space and national parks.

The children should continue to note down their reading from home and school in their reading record. The children will also continue to use AR to assess their comprehension of the books.

## Expressive Arts and Design

Music: Mr Miners will continue to teach our music lessons. We will be looking at brass instruments and a focus on pitch, dynamics, tempo and notation.

Art: We will be focusing on the skill of drawing this half term, using space as our influence, which ties in with our science topic.

## Foundation Subjects

Science: The children will look at space this half term. We will investigate the planets in our solar system, as well as the differences in these planets.

Geography: This half term we will be looking at our key question of 'Who are Britain's National Parks for?' We will investigate the location of Britain's 15 national parks, as well as being able to identify why they may be popular to tourists.

PSHE: This term we are looking at dreams and goals. We will also celebrate Child Mental Health Week, and Safer internet day.