

Religious Education

This term our question will be 'What do Christians believe God is like?'

We will explore parables from the Bible and consider what these stories mean to Christians. We will then investigate how Christians show their belief in God and including saying sorry and forgiving others.

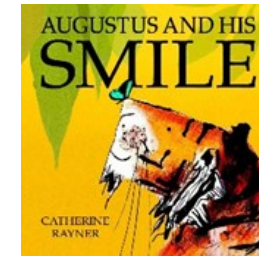
Reading

Year 1 children will continue to work through the phonics Bug Scheme and build up their sound knowledge.

Year 2 will build their comprehension skills using Accelerated Reader and through guided reading sessions. The theme for the first set of texts will be 'Remembrance'.

We will introduce the skills needed for good comprehension: Vocabulary, Inference, Prediction, Explaining, Retrieving and Sequencing

Literacy—Writing



Fiction text



Non-fiction text

Physical Education

PE sessions will continue to be on a Tuesday and a Thursday, with Mr Luxa taking the Tuesday sessions.

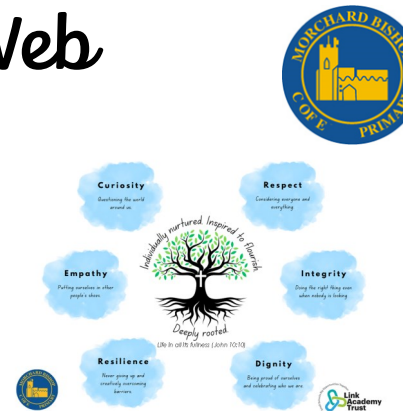
The focus for this term will be gymnastics. This will allow the children to develop basic movements including jumping, hopping and leaping. They will work in teams to produce a short group performance.

Our Topic Web

Autumn Term 2

2023

Willow Class



Mathematics

In Mathematics this term we will continue to build the skills of addition and subtraction. We will finish the term with a focus on place value and multiplication.

All topics will include lots of discussion and practical activities to allow children to consolidate their learning and explain their thinking.

Expressive Arts and Design

Music: In music, we will explore dynamics and tempo through the theme 'Animals'.

DT : In DT we will investigate structures by exploring 'Baby Bear's chair'. We will use a variety of skills, including drawing and print making.

Foundation Subjects

Science: The topic of Everyday Materials will continue. We will compare the suitability of different every day materials and investigate how the shapes of objects made by some materials can be changed.

History: The enquiry question for our topic is, Why was Charles sent to prison? We will explore the life and times in Britain during the period of the First World War both at home and overseas.

PSHE: The next Jigsaw theme is 'Celebrating Differences'. We will explore similarities and differences between ourselves and others and we will also discuss bullying and who we can talk to when we need help.